

Twist and Shout

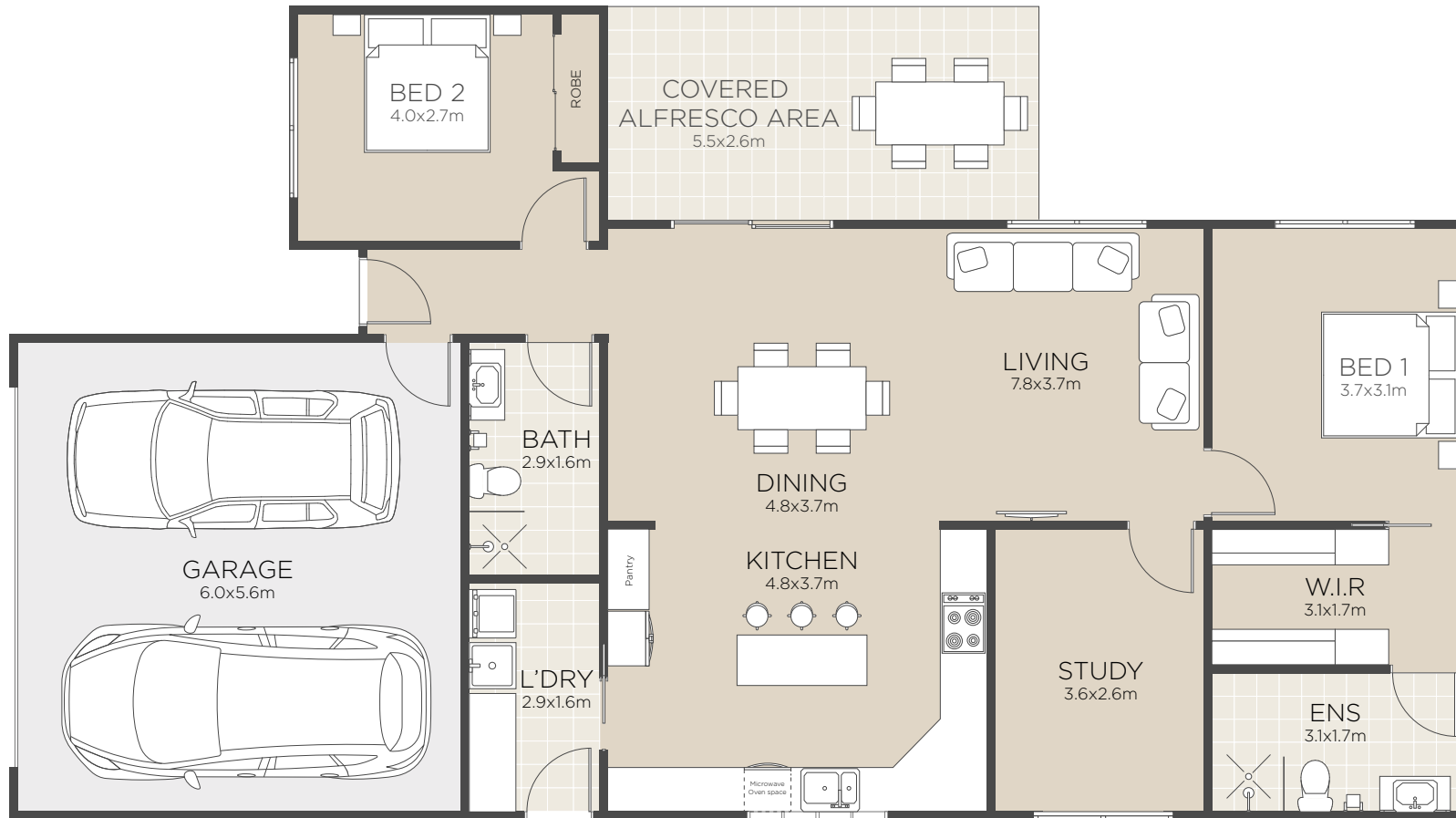
 2  2  1  2



CLIFTON
YAMBA

Home is displayed with optional upgrade

Twist and Shout



All floorplans and computer generated images are artists impressions only and the final form of the project is subject to change. These are intended as an introduction to the general content of the project only and interested parties should rely on their own enquiries.

- Luxurious master bedroom includes walk in wardrobe and ensuite bathroom
- Grand open plan living areas with raked ceiling
- Designer kitchen includes island breakfast bar
- Generous study or third bedroom

- Private covered alfresco area
- Spacious yard
- Quality fixtures and fittings
- Separate laundry
- Double garage

Living Area	111.6m ²
Alfresco	15.1m ²
Garage	35.5m ²
Total	161.9m²
Areas based on external wall footprint	

