

# Proud Mary

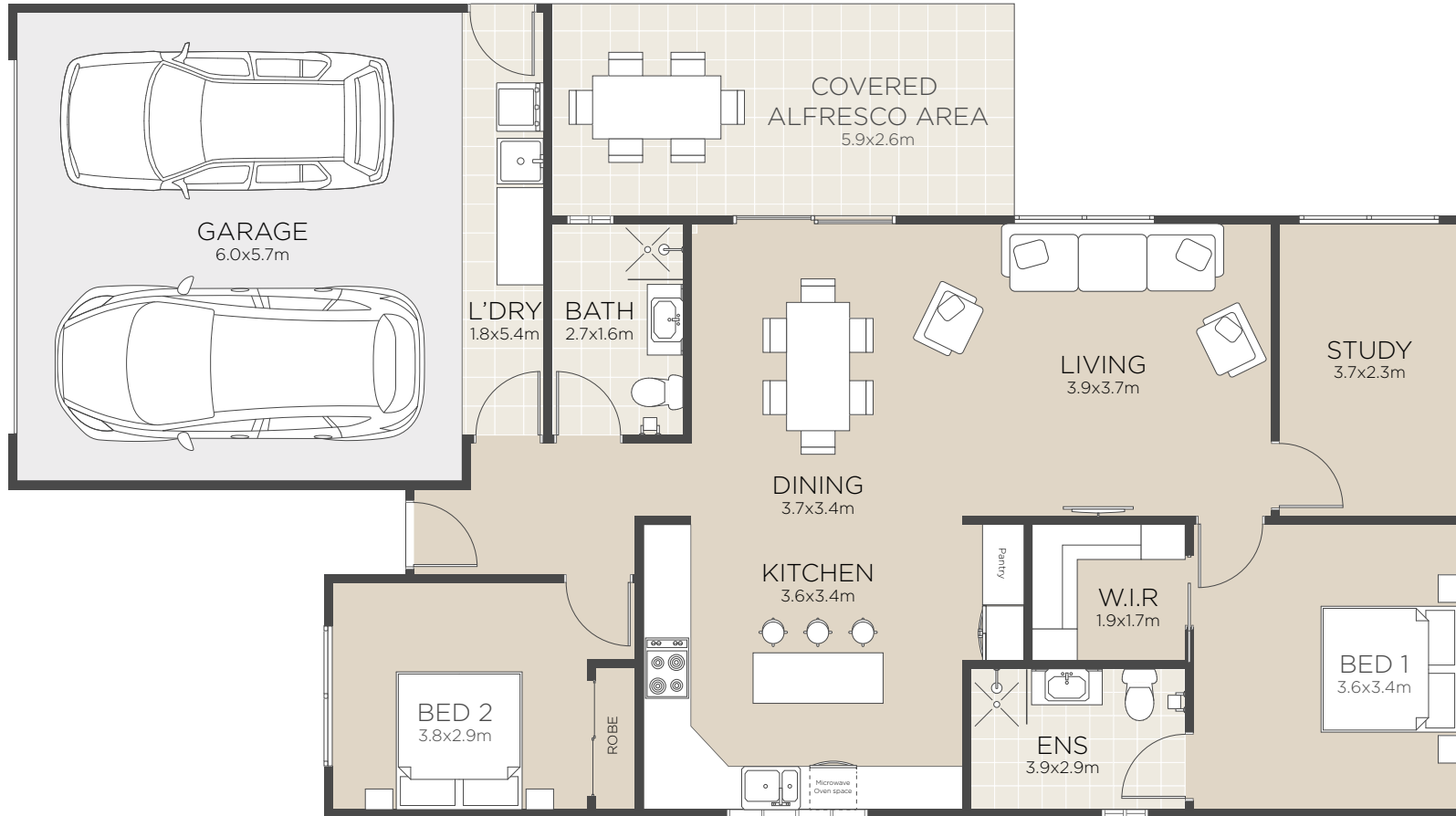
 2  2  1  2



Home is displayed with optional upgrade

**CLIFTON**  
YAMBA

# Proud Mary



All floorplans and computer generated images are artists impressions only and the final form of the project is subject to change. These are intended as an introduction to the general content of the project only and interested parties should rely on their own enquiries.

- Luxurious master bedroom includes walk in wardrobe and ensuite bathroom
- Grand open plan living areas with raked ceiling
- Designer kitchen includes island breakfast bar
- Generous study or third bedroom

- Private covered alfresco area
- Spacious yard
- Quality fixtures and fittings
- Double garage

Living Area	101.6m <sup>2</sup>
Alfresco	16m <sup>2</sup>
Garage	41.7m <sup>2</sup>
<b>Total</b>	<b>159.3m<sup>2</sup></b>
Areas based on external wall footprint	

