

Strawberry Fields

 2  1.5  1

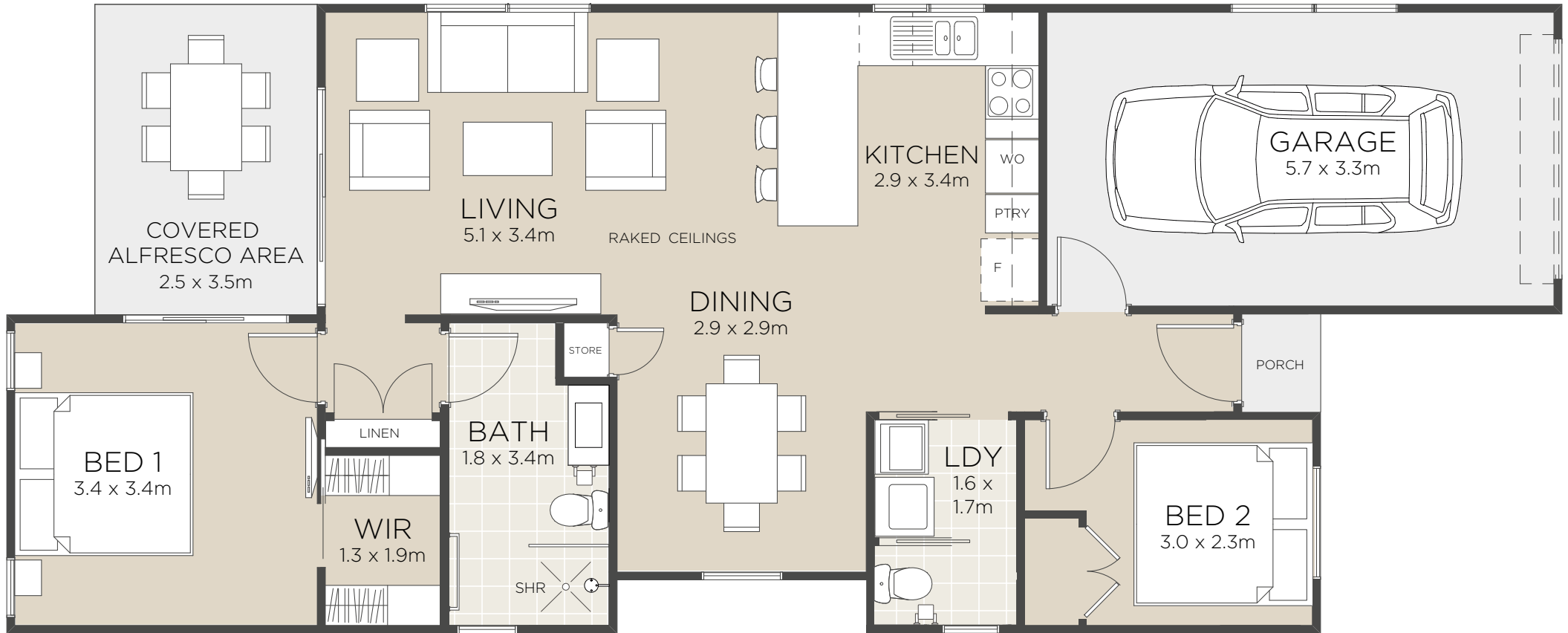


CLIFTON
YAMBA

Home is displayed with optional upgrade

Strawberry Fields

 2
  1.5
  1



All floorplans and computer generated images are artists impressions only and the final form of the project is subject to change. These are intended as an introduction to the general content of the project only and interested parties should rely on their own enquiries.

- Luxurious master bedroom includes walk in wardrobe and easy access to main bathroom
- Second bedroom or generous study
- Grand open plan living areas with raked ceiling
- Designer kitchen includes large breakfast bar

- Private alfresco area
- Spacious yard
- Quality fixtures and fittings
- Separate laundry with WC
- Single car garage

Living Area	77.5m ²
Alfresco + Porch	9.5m ²
Garage	20.0m ²
Total	107.0m²
<small>Areas based on external wall footprint</small>	



CLIFTON
YAMBA