

Ruby Tuesday

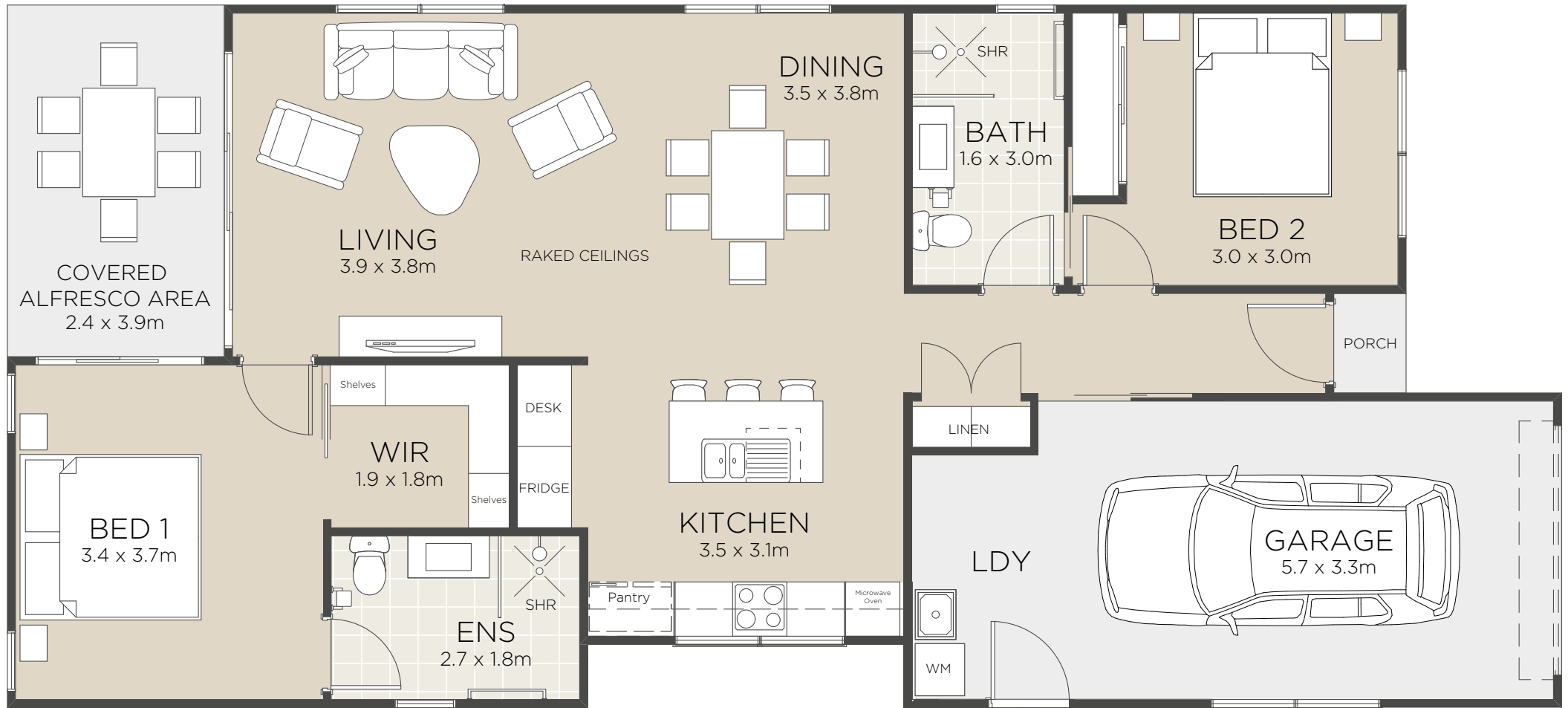
 2  2  1



CLIFTON
YAMBA

Home is displayed with optional upgrade

Ruby Tuesday



All floorplans and computer generated images are artists impressions only and the final form of the project is subject to change. These are intended as an introduction to the general content of the project only and interested parties should rely on their own enquiries.

- Two large double bedrooms
- Luxurious master bedroom includes en suite bathroom and walk in wardrobe
- Grand open plan living areas with raked ceiling
- Designer kitchen includes island breakfast bar
- Private alfresco area
- Spacious yard
- Quality fixtures and fittings
- Separate laundry
- Single car garage

Living Area	93.5m ²
Alfresco + Porch	10.0m ²
Garage	19.5m ²
Total	123.0m²

Areas based on external wall footprint



CLIFTON
YAMBA