

# Good Vibrations

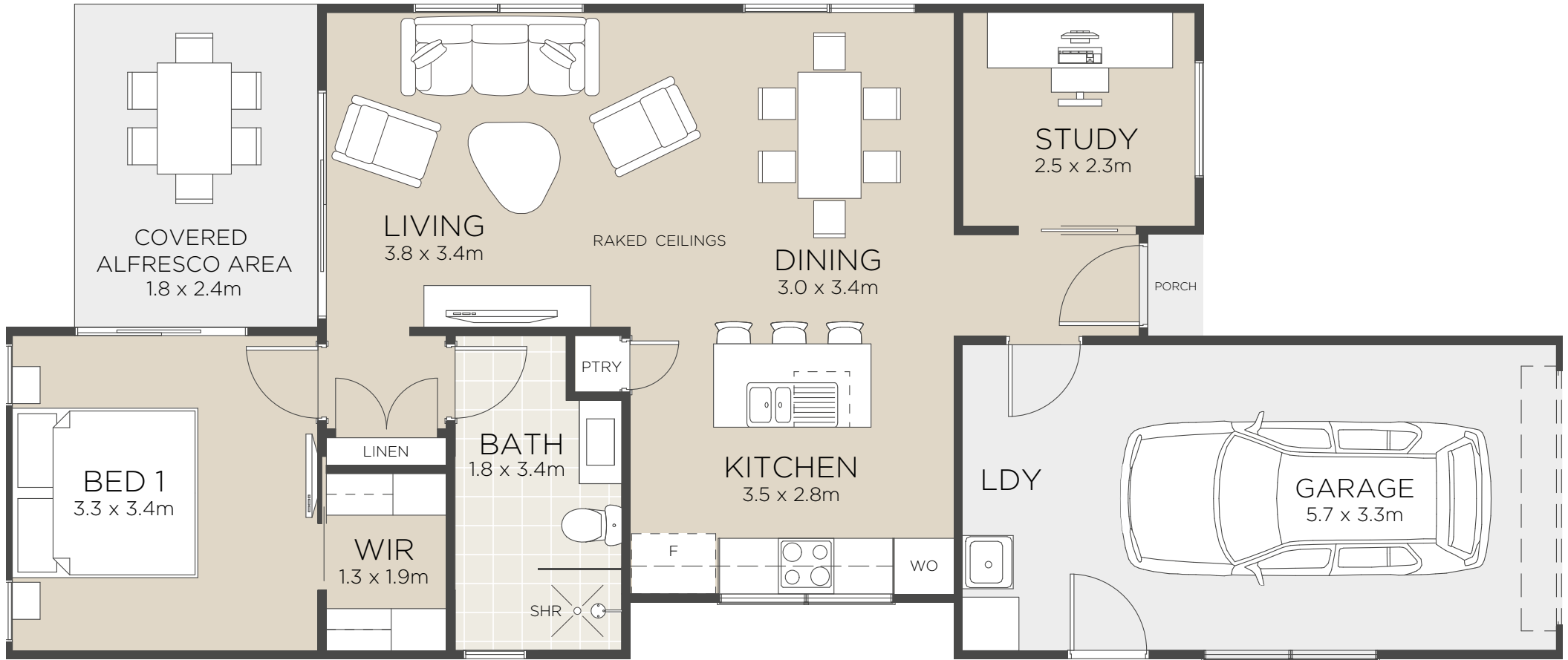


Home is displayed with optional upgrade



**CLIFTON**  
YAMBA

# Good Vibrations



All floorplans and computer generated images are artists impressions only and the final form of the project is subject to change. These are intended as an introduction to the general content of the project only and interested parties should rely on their own enquiries.

- Luxurious master bedroom includes walk in wardrobe and easy access to main bathroom
- Grand open plan living areas with raked ceiling
- Designer kitchen includes island breakfast bar
- Generous study
- Private alfresco area
- Spacious yard
- Quality fixtures and fittings
- Single car garage

Living Area	68.0m <sup>2</sup>
Alfresco + Porch	9.0m <sup>2</sup>
Garage	22.0m <sup>2</sup>
<b>Total</b>	<b>99.0m<sup>2</sup></b>

Areas based on external wall footprint

