

Elton

 3  2  1  2



Hip

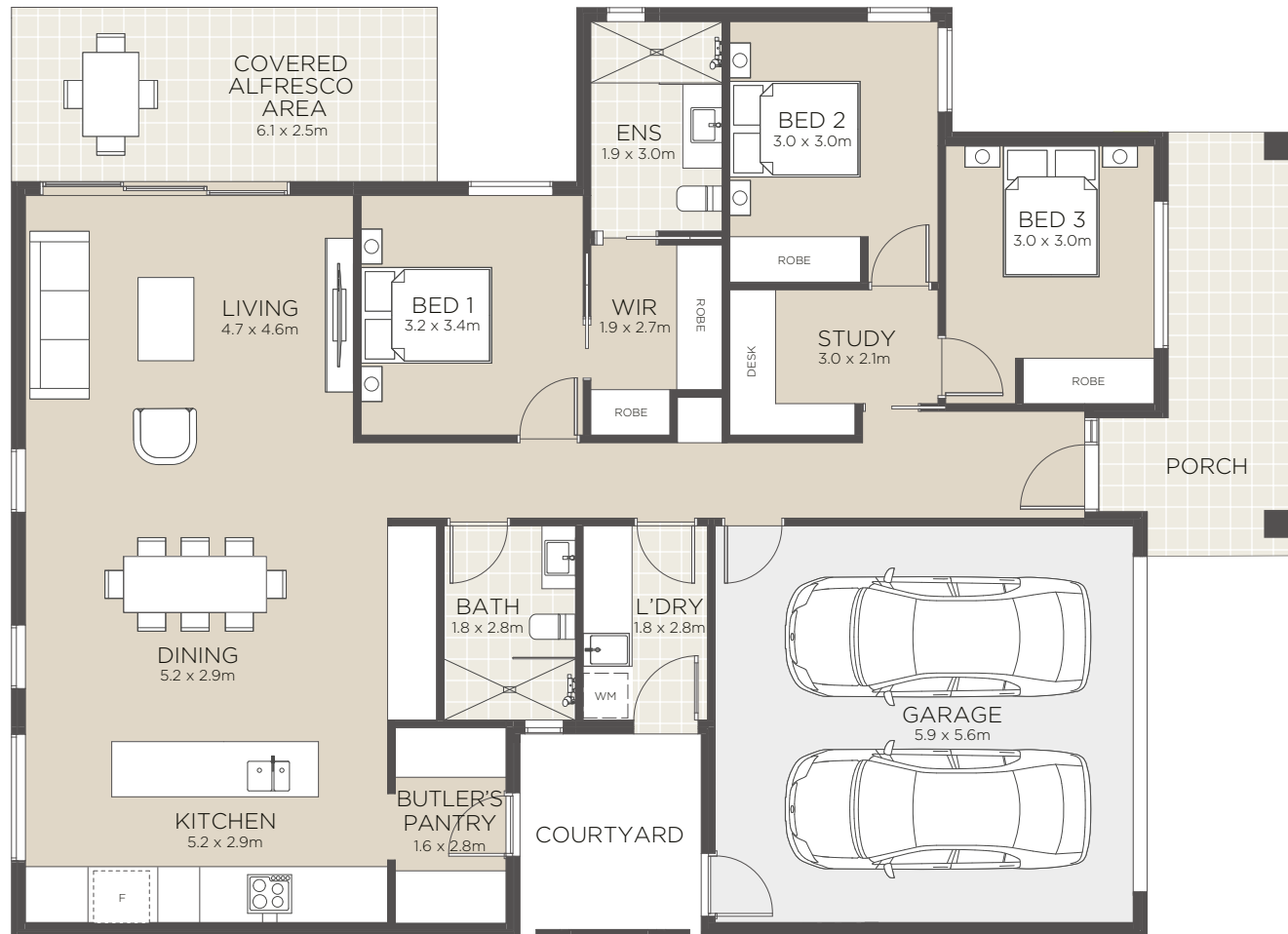


Gable



Closed Gable

All images are representative only



All floorplans and computer generated images are artists impressions only and the final form of the project is subject to change. These are intended as an introduction to the general content of the project only and interested parties should rely on their own enquiries.

- Luxurious master bedroom includes ensuite and walk in robe
- Large second and third bedrooms
- Private study
- Grand open plan living and dining
- Designer kitchen with breakfast island and butler's pantry
- Quality fixtures and fittings
- Private alfresco area
- Seamless indoor-outdoor living
- Landscaped yard
- Internal laundry
- Double car garage

Internal	136m ²
Garage	33m ²
Alfresco	15m ²
Porch	14m ²
Total	198m²

Area based on internal footprint



CLIFTON
VICTOR HARBOR