

Hendrix

 2  2  1  2



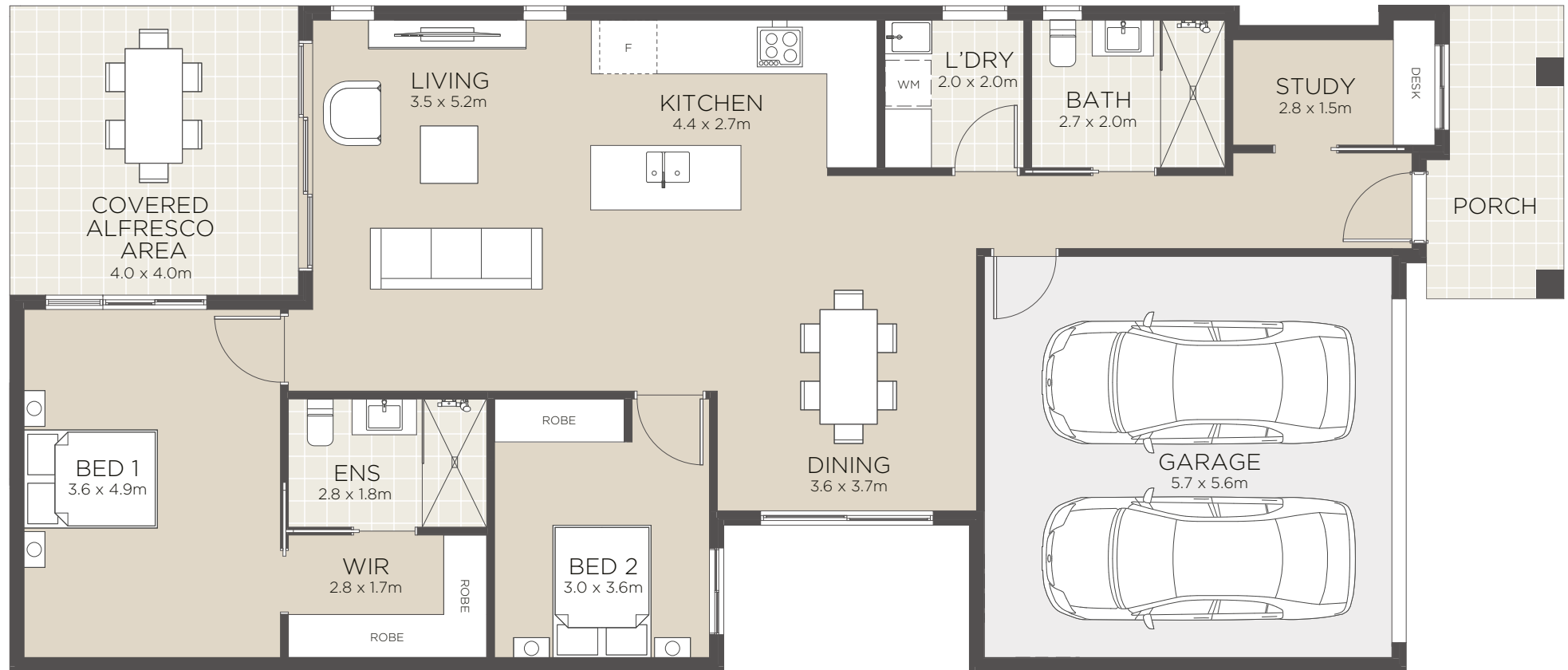
Popped Hip



Gable



Closed Gable



All floorplans and computer generated images are artists impressions only and the final form of the project is subject to change. These are intended as an introduction to the general content of the project only and interested parties should rely on their own enquiries.

- Luxurious master bedroom includes ensuite, walk in robe and direct alfresco access
- Large second bedroom
- Private study
- Grand open plan living and dining with raked ceiling
- Designer kitchen with breakfast island

- Quality fixtures and fittings
- Private alfresco area
- Seamless indoor-outdoor living
- Landscaped yard
- Internal laundry
- Double car garage

Living Area	113.72m ²
Alfresco	16.28m ²
Garage	31.92m ²
Total	169.10m²

Areas based on external wall footprint

