

Elton

 3  2  1  2



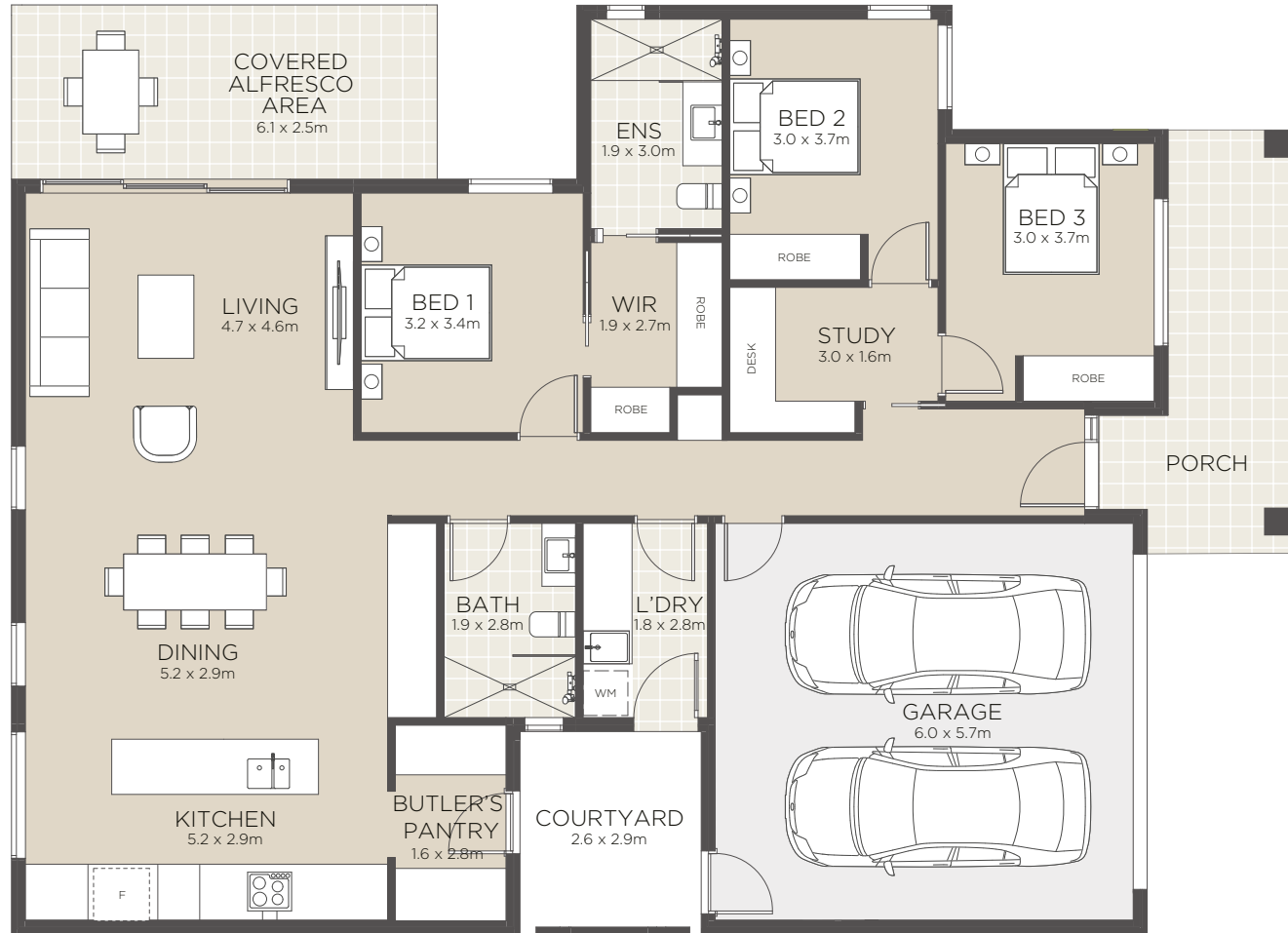
Popped Hip



Gable



Closed Gable



All floorplans and computer generated images are artists impressions only and the final form of the project is subject to change. These are intended as an introduction to the general content of the project only and interested parties should rely on their own enquiries.

- Luxurious master bedroom includes ensuite and walk in robe
- Large second and third bedrooms
- Private study
- Grand open plan living and dining with raked ceiling
- Designer kitchen with breakfast island and butler's pantry
- Quality fixtures and fittings
- Private alfresco area
- Seamless indoor-outdoor living
- Landscaped yard
- Internal laundry
- Double car garage

Living Area	135.84m ²
Alfresco	15.21m ²
Garage	33.99m ²
Total	198.71m²

Areas based on external wall footprint

