

# Sweet Caroline

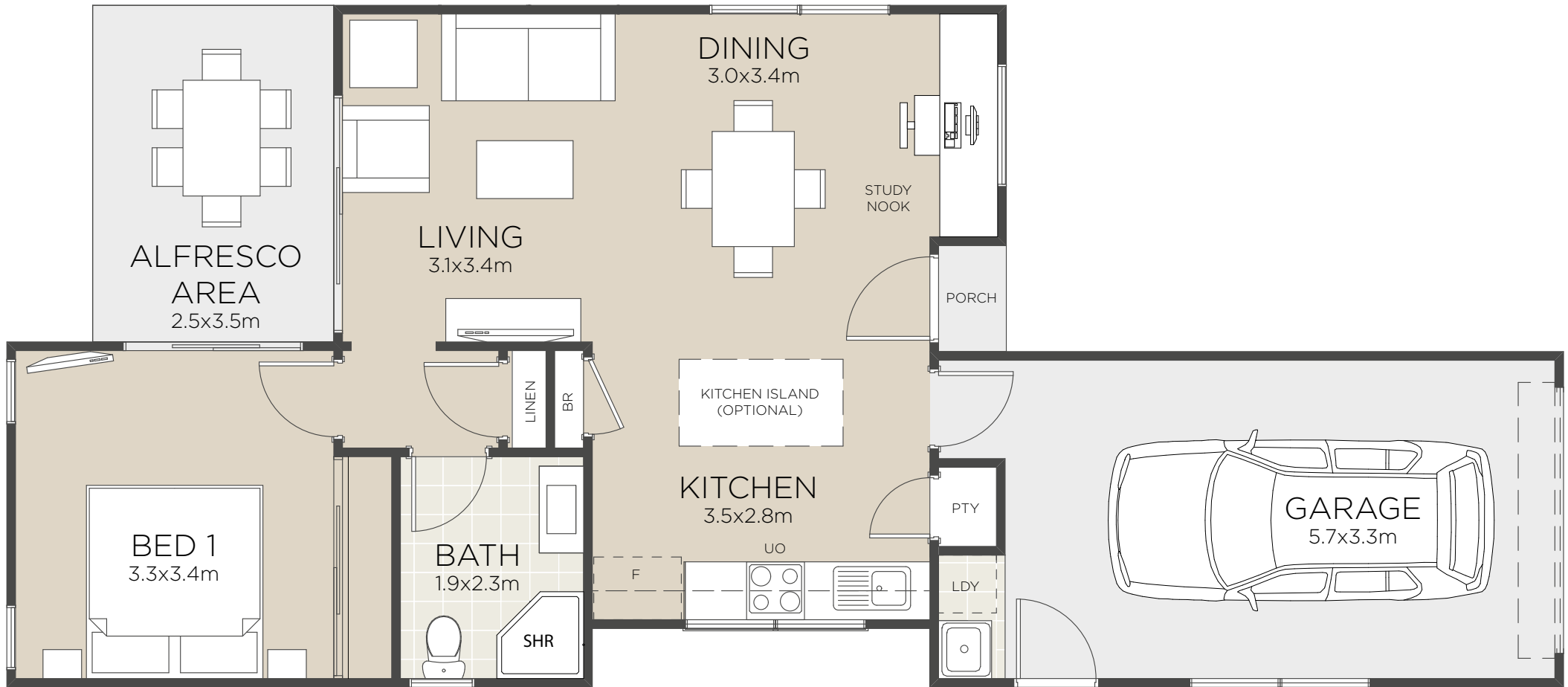


Home is displayed with optional upgrade



**CLIFTON**  
YAMBA

# Sweet Caroline



All floorplans and computer generated images are artists impressions only and the final form of the project is subject to change. These are intended as an introduction to the general content of the project only and interested parties should rely on their own enquiries.

- Luxurious master bedroom with easy access to main bathroom
- Grand open plan living area
- Designer kitchen with optional island
- Study nook
- Private alfresco area
- Spacious yard
- Quality fixtures and fittings
- Single car garage

Living Area	56.0m <sup>2</sup>
Alfresco	9.5m <sup>2</sup>
Garage	21.0m <sup>2</sup>
<b>Total</b>	<b>86.5m<sup>2</sup></b>
Areas based on external wall footprint	



**CLIFTON**  
YAMBA