

# Daydream Believer

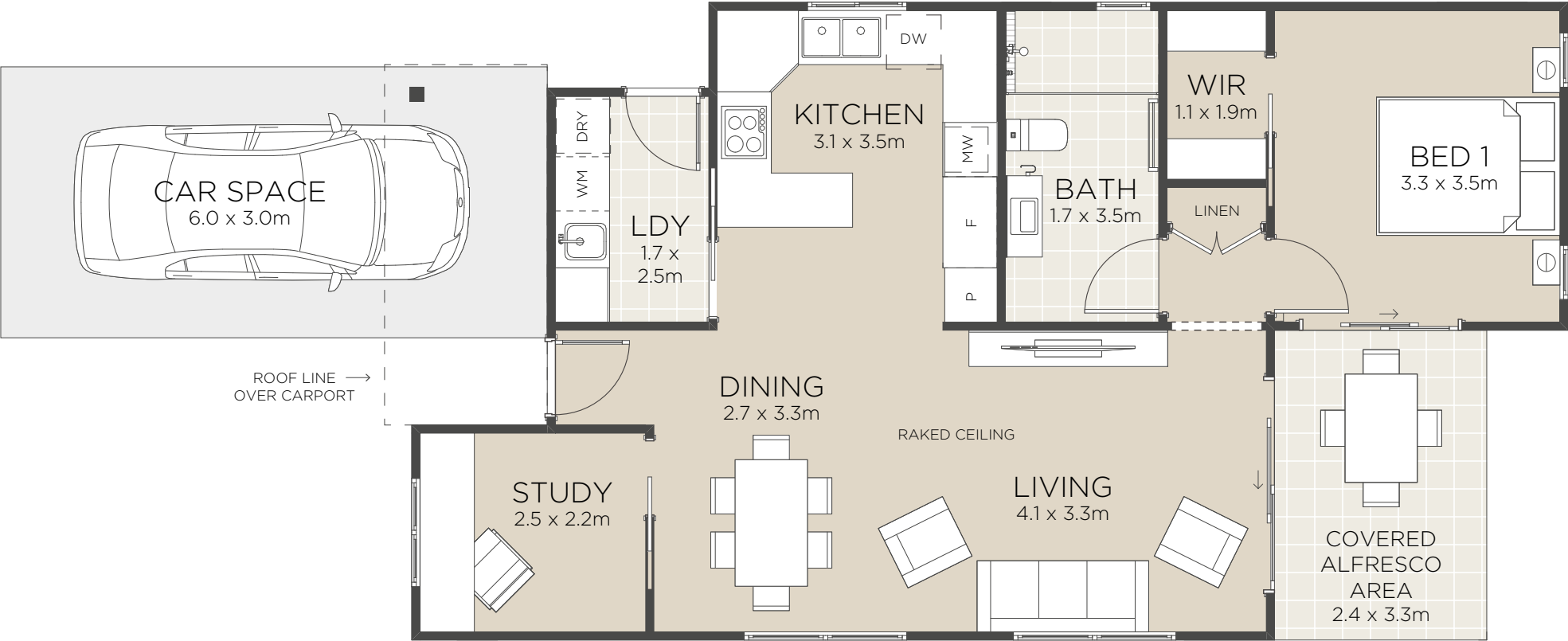


Representative image only



**CLIFTON**  
TAREE

# Daydream Believer



All floorplans and computer generated images are artists impressions only and the final form of the project is subject to change. These are intended as an introduction to the general content of the project only and interested parties should rely on their own enquiries.

- Luxurious bedroom includes walk in robe
- Grand open plan living areas with raked ceiling
- Designer kitchen with breakfast bar
- Private study
- Private alfresco area
- Seamless indoor-outdoor living
- Spacious yard
- Quality fixtures and fittings
- Separate internal laundry
- Single car space

Living Area	70.7m <sup>2</sup>
Alfresco	8.1m <sup>2</sup>
Parking Space	18.0m <sup>2</sup>
<b>Total</b>	<b>96.8m<sup>2</sup></b>

Areas based on external wall footprint



**CLIFTON**  
TAREE